



WHEN DATA EATS SCADA

THE FUTURE OF DIGITAL OPERATIONS



DIGITAL FUTURE

ALL LEGACY ANALOG OT WILL EVENTUALLY BE REPLACED

A close-up photograph of several strands of braided rope. The rope is primarily red with white sections woven into the pattern. The texture is highly detailed, showing the individual fibers and the tight weave. The background is slightly blurred, focusing attention on the foreground strands.

OT, IT & JUST T

IT'S ALL JUST BLINKY LIGHTS ANYMORE



HYPERINNOVATION

ACCELERATING DISRUPTION – INTENTIONAL & ACCIDENTAL



HYPERAUTOMATION

HOW FAR SHOULD WE AUTOMATE? AS FAR AS WE CAN.



HYPERCONNECTED

SMART EVERYTHING WILL BE CONNECTED TO SMART EVERYTHING



OVERFLOW

WHAT HAPPENS WHEN EVERY DEVICE HAS A DATA STREAM?

EASY SELL

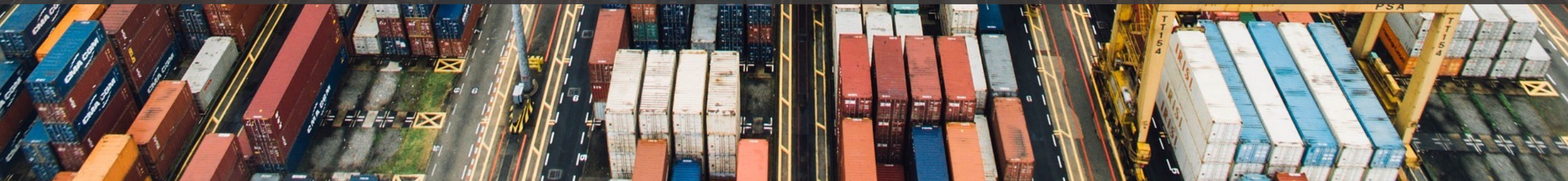
EFFICIENCIES THROUGH OPERATIONAL DATA ANALYSIS





INTELLIGENCE

SOMEONE ELSE CAN DO IT FASTER CHEAPER & BETTER THAN YOU





BEYOND EFFICIENCY

WHAT IF YOU COULD USE THAT OPERATIONAL DATA FOR OTHER THINGS?



PRIVACY PROBLEM

IS YOUR DATA WORTH CHEAPER (FREE) SERVICE?

PURE OPS EXAMPLE

CONTEXTUAL SYSTEM DATA & SURROUNDING EQUIPMENT



TIPPING POINT

WHEN WILL REVENUE FROM DATA PRODUCTS TAKE THE LEAD?

IN THE NOT-TOO-DISTANT
FUTURE YOU MAY MAKE
MORE MONEY FROM THE
OPERATIONAL DATA AROUND
MAKING THE PRODUCT
THAN THE PRODUCT ITSELF



PROVEN MODEL

CALL WAITING, CALL FORWARDING, TEXTING, LONG DISTANCE, DATA

A close-up photograph of a bicycle wheel with a black tire and spokes, mounted on a metal pole. A silver chain is wrapped around the pole and the wheel, secured with a blue padlock. The background is a blurred city street with people and buildings.

REGULATION

PRECEDENT, INNOVATION & PUBLIC BENEFIT



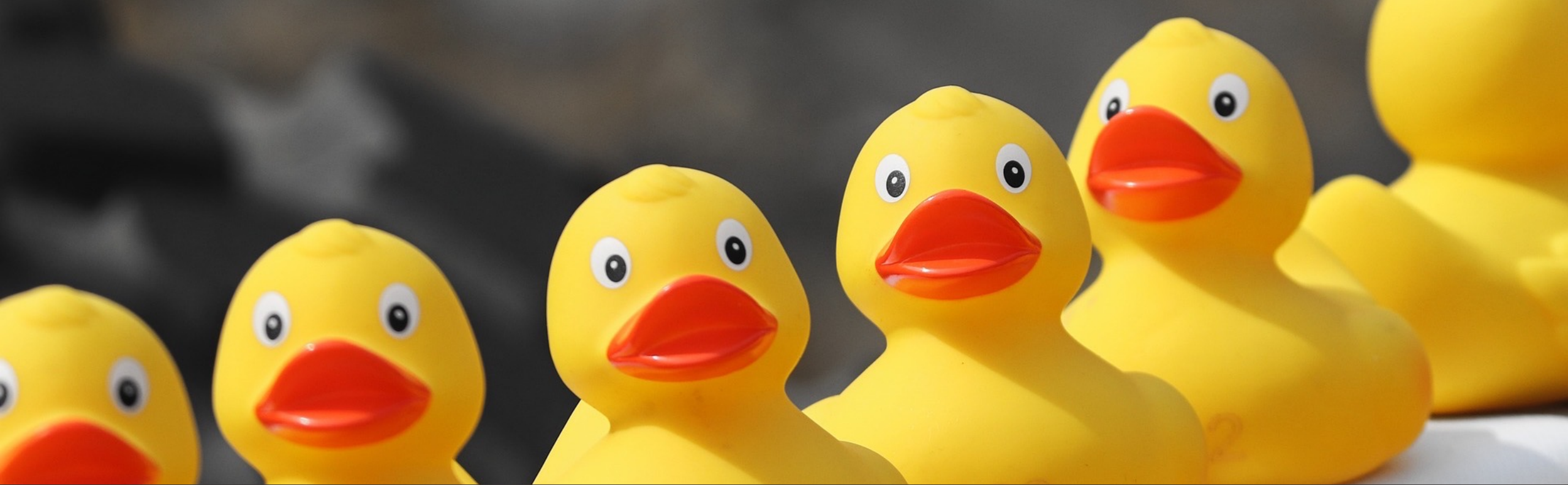
TRANSFORM

DATA IS NOW YOUR BUSINESS



HANDLE WITH CARE

DATA IS THE NEW OIL – HIGHLY VALUABLE & HIGHLY TOXIC



MOVING TARGETS

PROTECT THE PROCESS, THE PRODUCT & THE DATA PRODUCTS

A close-up photograph of a manual shift knob. The knob is black with a silver-colored metal ring around the top. The top surface of the knob is engraved with a gear pattern. The letters 'R', '1', '2', '3', '4', '5', and '6' are arranged in a standard H-pattern. The 'R' is at the top, '1' is to its right, '2' is below '1', '3' is below '2', '4' is to the left of '3', '5' is below '4', and '6' is below '5'. The background is dark and out of focus.

MANUAL SHIFT

OPERATIONAL OBLIGATIONS VS PROFIT MOTIVE



BIGGER PICTURE

NEW DEPENDENCIES BETWEEN OT & IT (& CLOUD)

A low-angle, upward-looking photograph of the Space Shuttle Main Engines (SSMEs) on the External Tank and Solid Rocket Boosters. The engines are arranged in a cluster, with their large, red, circular nozzle exits pointing towards the viewer. The white metal structure of the engines and boosters is visible, showing rivets and various mechanical details. The background is a clear blue sky.

GRAB A JETPACK

INNOVATE AHEAD OF THE DISRUPTION



@patrickcmiller



linkedin.com/in/millerpatrickc



pmiller@amperesec.com



www.amperesec.com



+15032721414



AMPERE