

WHAT IF
EVERYTHING
GOT HACKED?

B	I	N	G	O
SolarWinds	Kaseya	HAFNIUM (Exchange)	Executive Orders	QNX
ATT&CK D3FEND	Print Nightmare	Pegasus	Accellion	Pulse VPN
T-Mobile	Oldsmar	STUXNET (Free Space)	Side-channel CPU attacks	Cyberspace Solarium
Fortinet VPN Passwords	SBOM	PetitPotam	ModiPWN	Dell SupportAssist
Zero Trust	Colonial Pipeline	Cobalt Strike	GhostScript	WWS CISA Alert

GET READY
HERE WE GO...

SMART HUB

Search



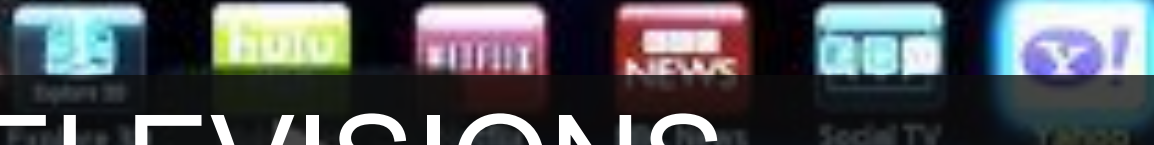
Your Video



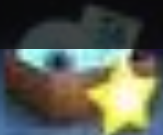
Samsung Apps



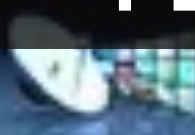
Recommended



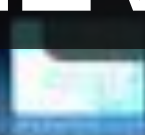
TELEVISIONS



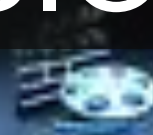
Favorites



Channel



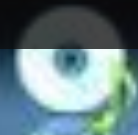
Web Browser



Videos



Photos



Music



Schedule Man...



Source



AllShare



Blockbuster



CinemaNow



ESPN ScoreCa...

Logout Sort by Edit Mode Settings



VOICE ASSISTANTS



TOASTERS



KETTLES

Mr. Coffee

We Moments

How it Works

SHOP NOW

Brew a Fresh Pot From
Anywhere With Your
Smart Device!

COFFEE MAKERS



Mr. Coffee® 10-Cup Smart Optimal Brew™

@patrickcmiller | www.amperesec.com | +15032721414



VACUUMS



REFRIGERATORS

HOME ALARM SYSTEMS

Whole Home Protection

Protection for every window, room and door. Against intruders, fires, water damage, medical emergencies & more. All monitored 24/7 by professionals ready to dispatch police.

[WATCH VIDEO](#)

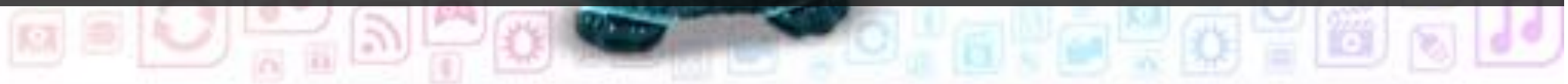


★★★★★
Google
Customer Review



- 1 INTERACTS WITH FURBY CONNECT WORLD APP
- 2 IN-APP SURPRISES
- 3 CONNECTS WITH FRIENDS
- 4 DOWNLOAD THE APP!

KIDS' TOYS



ADULT TOYS



TAMPONS

Bluetooth



TOILETS

HOT TUBS





BABY MONITORS

WATCHES



Four fitness trackers are shown against a white background. One is teal, one is orange, one is blue, and one is black. They are arranged in a cluster, with the teal one on the left, the orange one in the back, the blue one in the front, and the black one on the right. A dark grey horizontal bar is overlaid across the middle of the image, containing the text 'FITNESS TRACKERS' in white, bold, sans-serif capital letters.

FITNESS TRACKERS



LIGHT BULBS

twinkly

HOME

WHAT'S NEW

EXPERIENCE

COLLECTION

WHERE TO BUY



CHRISTMAS LIGHTS

Smart lights. But with class.

GOLD EDITION

DISCOVER MORE



@patrickcmiller | www.amperesec.com | +15032721414



PLUGS

A white automatic pet feeder is shown in a bright, clean indoor setting. A white dog is eating from the feeder's bowl. The feeder has a cylindrical body and a flat base with a bowl. A potted plant is visible in the background.

PET FEEDERS

ROSARY



About Tapia

A home communication robot watching over your family.

LEARN MORE

Tapia Instruction Manual

The online version of the instruction manual for Tapia for individuals.

VIEW THE INSTRUCTION MANUAL

TAPIA PLAY

TAPIA PLAY is a free educative game that was developed to make programming easy for newcomers to learn.

LEARN MORE

HOTEL COMPANION ROBOTS



A close-up photograph of a person's hands adjusting a black and orange hiking backpack. The person is wearing a black long-sleeved shirt. The backpack has a black main body with orange accents on the side and bottom. The person is pulling on a grey strap that is attached to a black buckle. The background is a blurred outdoor setting.

HIKING GEAR

Home / Guitar Amplifiers / Contemporary-Digital / Mustang™ GT 100

MUSTANG™ GT 100

Model #: 2310200000



COLOR

Black



VOLTAGE

120V

Fender Learn to play. Save 10% on gear.
PLAY START YOUR FREE TRIAL >

\$399.99

FREE ON THE WAY

Order now and we expect to ship within the next 30 days.

ADD TO CART

FIND IN STORE

Help



GUITAR AMPS

Fitbit Aria 2™ & Fitbit Aria Air™ Smart Scales

BATHROOM SCALES

Choose from two styles of smart scales to track weight alongside Fitbit products to help you reach your health and fitness goals.

ARIA 2



ARIA AIR

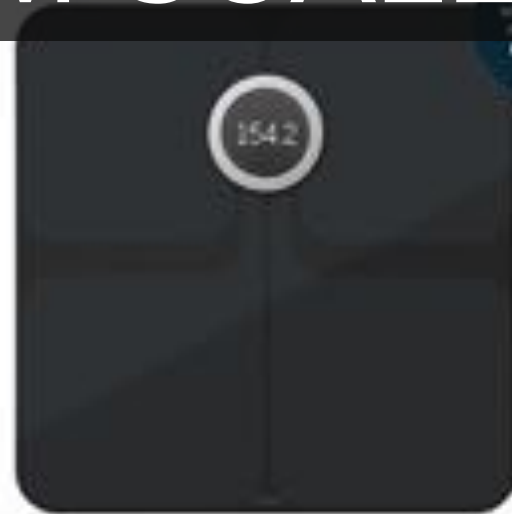


Selected

Black

QUANTITY

1 ▾



Learn More



DIGITAL CAMERAS



CRYPTOWALLETS



Iris Recognition

Iris recognition is the most reliable and secure biometric technology after DNA.



Encrypted Only by You

eyeDisk frees you from worries of losing your USB drive. AES-256 is a key generation method used to securely encrypt your data and prevent unwanted access to your files.



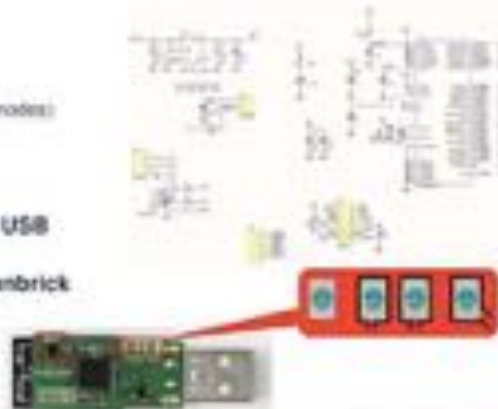
Speed

With integrated camera on flash disk, quick capture of the iris for enrollment, open it with one glance in 0.5s.

ENCRYPTED USB DRIVES

WHID Injector – Schematics & Specs

- Atmega 32u4
 - Arduino-Friendly
- ESP-12
 - WiFi (both AP and Client modes)
 - TCP/IP Stack
 - DNS Support
 - 4MB Flash
- Pinout for weaponizing USB gadgets
- HALL Sensor for easy unbrick



ANYTHING USB

How To Bring HID Attacks To The Next Level

Luca Bongiorno

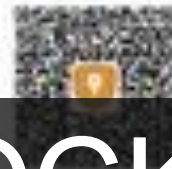
@patrickcmiller | www.amperesec.com | +15032721414



Scan the QR code to download the app

iOS

Android



PADLOCKS



Rechargeable battery



Unlocking Methods

Use button / fingerprint / password to unlock on APP, or input fingerprint on padlock to unlock.



A hand holds a smartphone displaying a door lock control app. The app interface includes a top navigation bar with several circular icons, a central circular dial, and a bottom row of five colored buttons (red, red, red, red, teal). To the right of the phone is a smart door lock on a grey door. The lock features a black keypad with white numbers 1-9, 0, and a lock icon, and a silver circular keyhole below it.

DOOR LOCKS

A close-up photograph of a hand in a dark jacket turning a silver, modern hotel door handle. The background is a blurred hotel room with warm lighting, a window with curtains, and a lamp. A dark horizontal bar is overlaid across the middle of the image, containing the title text.

HOTEL ROOM LOCKS



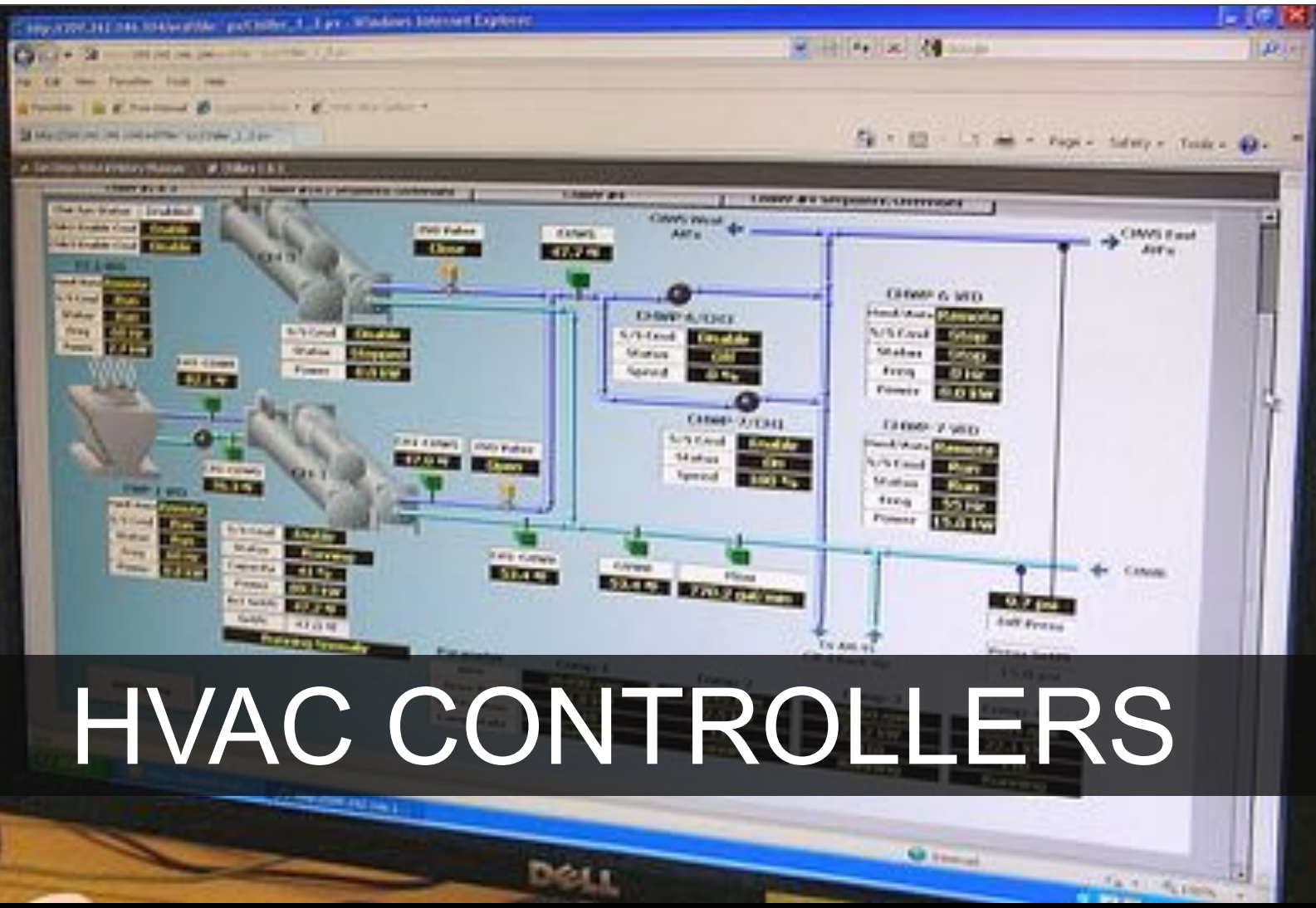
ACCESS CONTROL SYSTEMS

IP SECURITY CAMERAS





THERMOSTATS



HVAC CONTROLLERS

A photograph of a modern, multi-story glass building at dusk. The building's interior lights are on, and the sky is a mix of blue and grey. In the foreground, a person is skateboarding on a ramp. The text "SMART BUILDINGS" is overlaid in white on a dark horizontal band across the middle of the image.

SMART BUILDINGS

CONSTRUCTION CRANES

A photograph of several construction cranes silhouetted against a vibrant sunset sky. The sun is low on the horizon, creating a warm orange and yellow glow. The cranes are positioned at various heights and angles, with their long jibs extending across the frame. The sky is filled with soft, wispy clouds that catch the light of the setting sun.

A photograph of a drone in flight against a clear blue sky. The drone is positioned on the left side of the frame, with its four propellers visible. A dark horizontal band runs across the center of the image, containing the word "DRONES" in white, bold, uppercase letters.

DRONES



DRONES



TRACTORS

PRECISION AGRICULTURE



Lojack® SureDrive™
Peace of Mind for the Drive Ahead™



VEHICLE TRACKERS

Lojack® SureDrive™ is a mobile app
that connects you with your car



VEHICLE KEY FOBs



ELECTRIC CAR CHARGERS



ELECTRIC CARS

REGULAR CARS



ROAD SIGNS

A photograph of two traffic signals on a horizontal pole against a blue sky with light clouds. The bottom light of each signal is illuminated with a bright green light. A dark horizontal bar is overlaid across the middle of the image, containing the text 'TRAFFIC SIGNALS' in white capital letters.

TRAFFIC SIGNALS



TRAINS



YACHTS

SHIPPING VESSELS



AIRPLANES





SATELLITES



CELL TOWERS

KIOSKS





MOBILE HOTSPOTS



MOBILE PHONES

A close-up photograph of a person's hands holding a tablet computer. The screen displays lines of code in a light blue font on a dark background. A dark horizontal banner is superimposed across the middle of the image, containing the word 'TABLETS' in large, white, sans-serif capital letters.

TABLETS



KEYBOARDS



MICE

A photograph of a person with long hair, wearing a light-colored t-shirt, sitting at a desk and typing on a silver laptop. A clear glass of water is in the foreground. The background is a plain, light-colored wall. A dark horizontal band is overlaid across the middle of the image, containing the word 'LAPTOPS' in white capital letters.

LAPTOPS

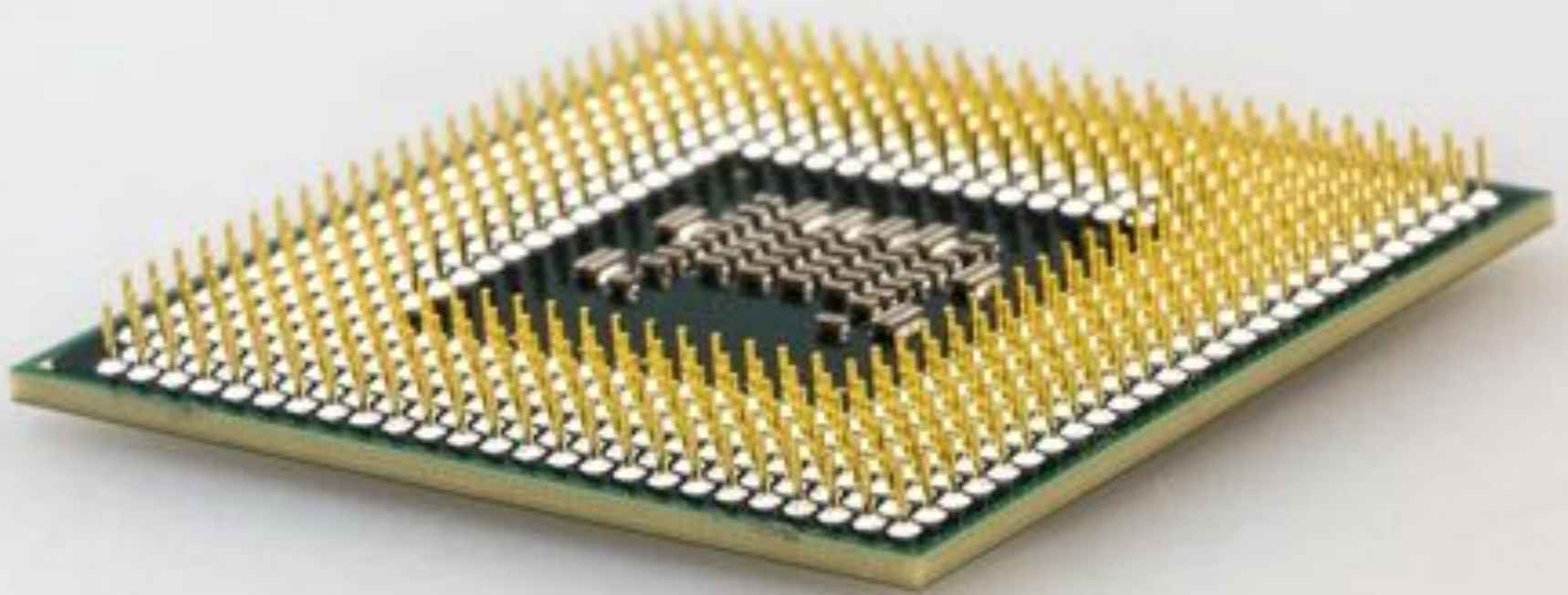
A photograph of a server rack with a dark horizontal band across the middle containing the text "WORKSTATIONS". The background shows a dense array of cables and network ports. A prominent yellow cable is visible in the lower right, and a red cable is on the left. A circular ventilation grille is visible in the upper right corner.

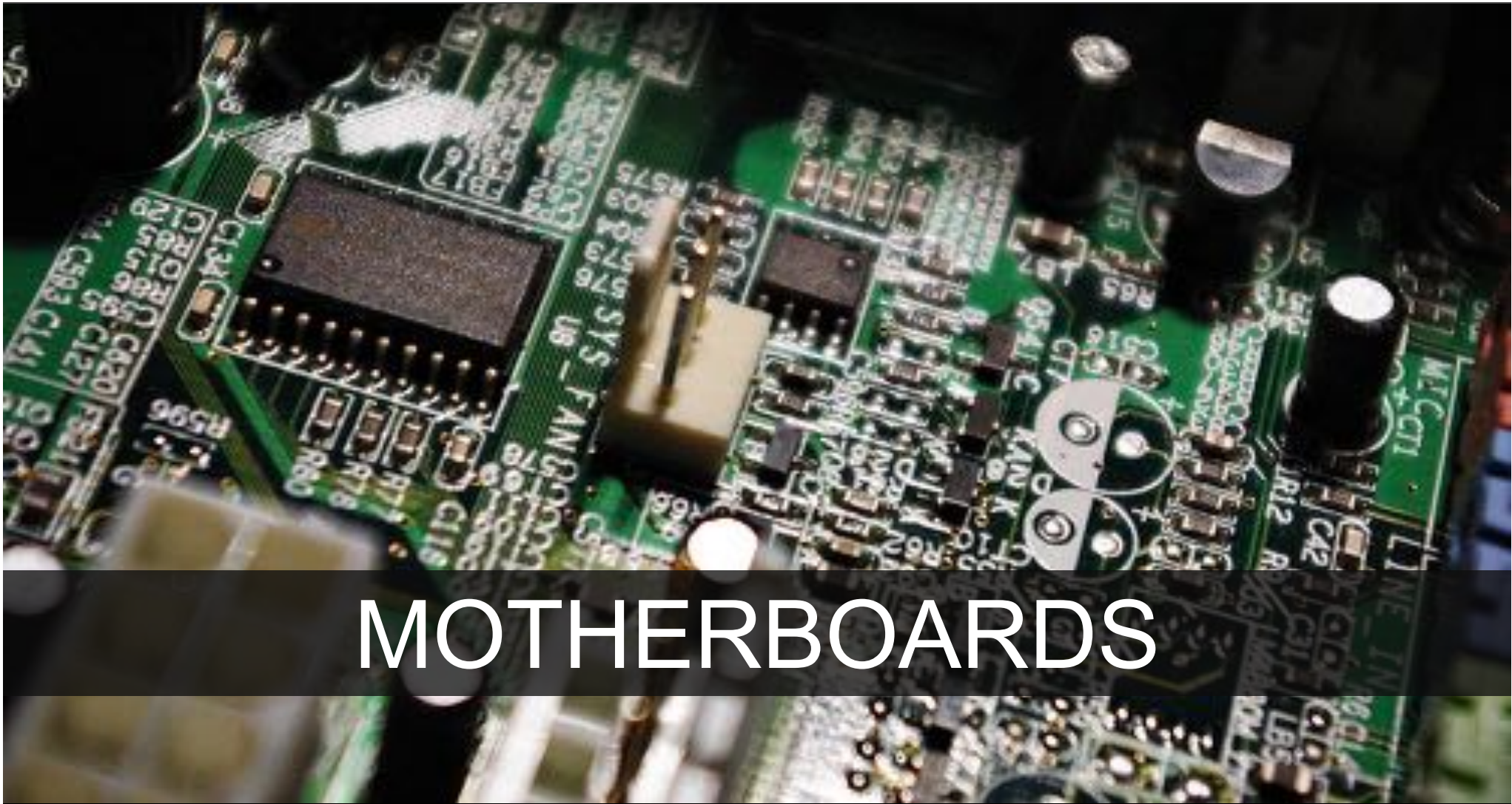
WORKSTATIONS



SERVERS

PROCESSORS





MOTHERBOARDS

VMware ESXi 6.0.0 (VMKernel Release Build 2494585)

Xen HVM domU

Intel(R) Xeon(R) CPU E5-2699 v3 @ 2.38GHz
4 GiB Memory

No compatible network adapter found. Please consult the
product's Hardware Compatibility Guide for a list of
supported adapters.

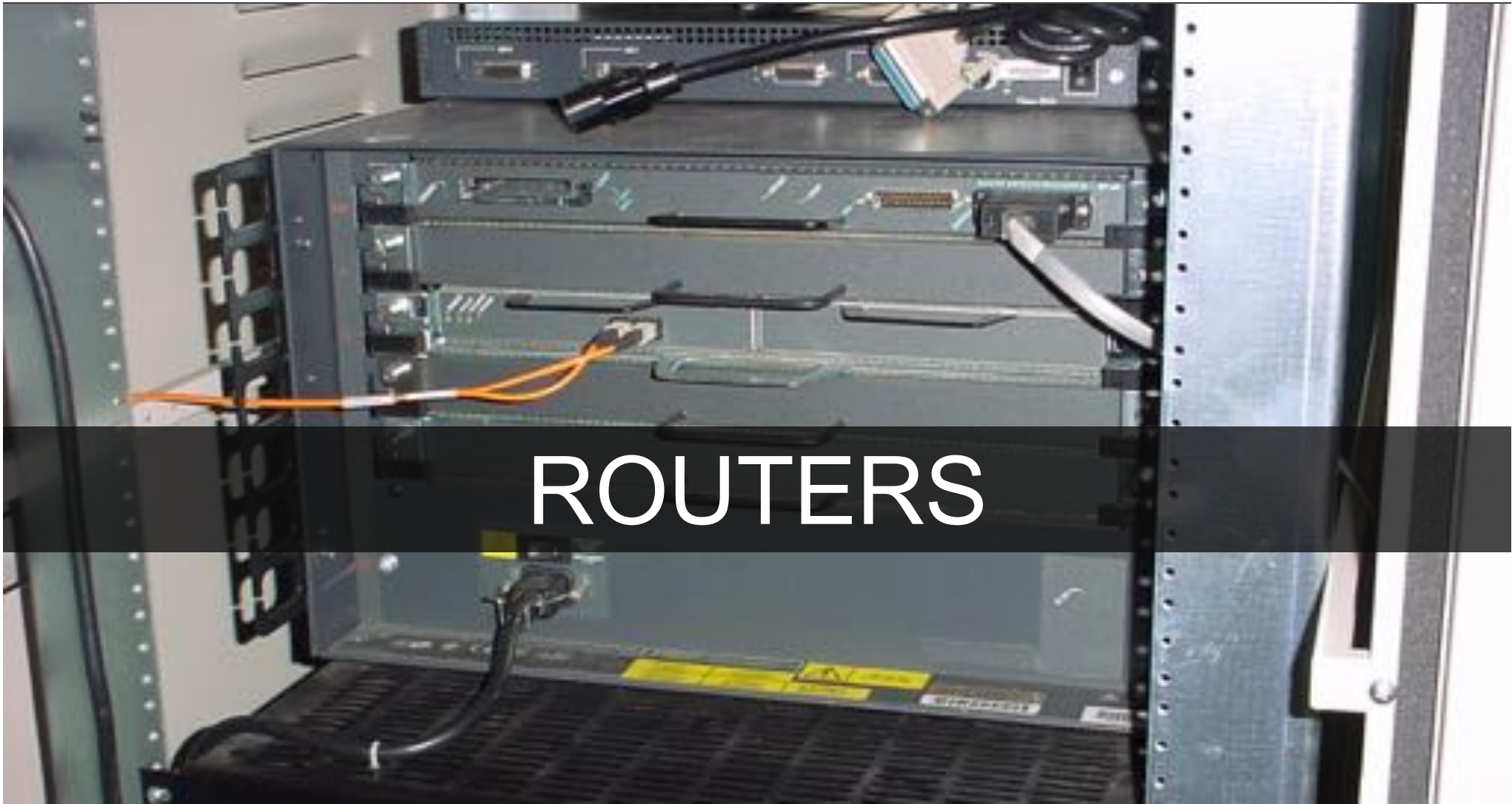
HYPERVERSORS

<F2> Customize System/View Logs

<F12> Shut Down/Restart

A close-up photograph of a network switch panel. The panel is dark grey or black with several rows of ports. The top row of ports is visible, with some ports numbered 10, 12, 14, and 16. The bottom row of ports is also visible, with some ports numbered 10, 12, 14, and 16. Numerous white network cables are plugged into the ports. Many of the ports have small green LEDs that are glowing, indicating active connections. The background is dark, and the overall lighting is dim, with the primary light source being the green LEDs.

SWITCHES



ROUTERS



FIREWALLS

CONTAINERS





BUCKETS

A photograph of an empty classroom. The room is filled with rows of wooden desks and dark chairs, arranged in a traditional classroom layout. In the background, there is a chalkboard and a large map of the world on the wall. The lighting is bright, and the overall atmosphere is quiet and empty.

SCHOOLS



POLICE



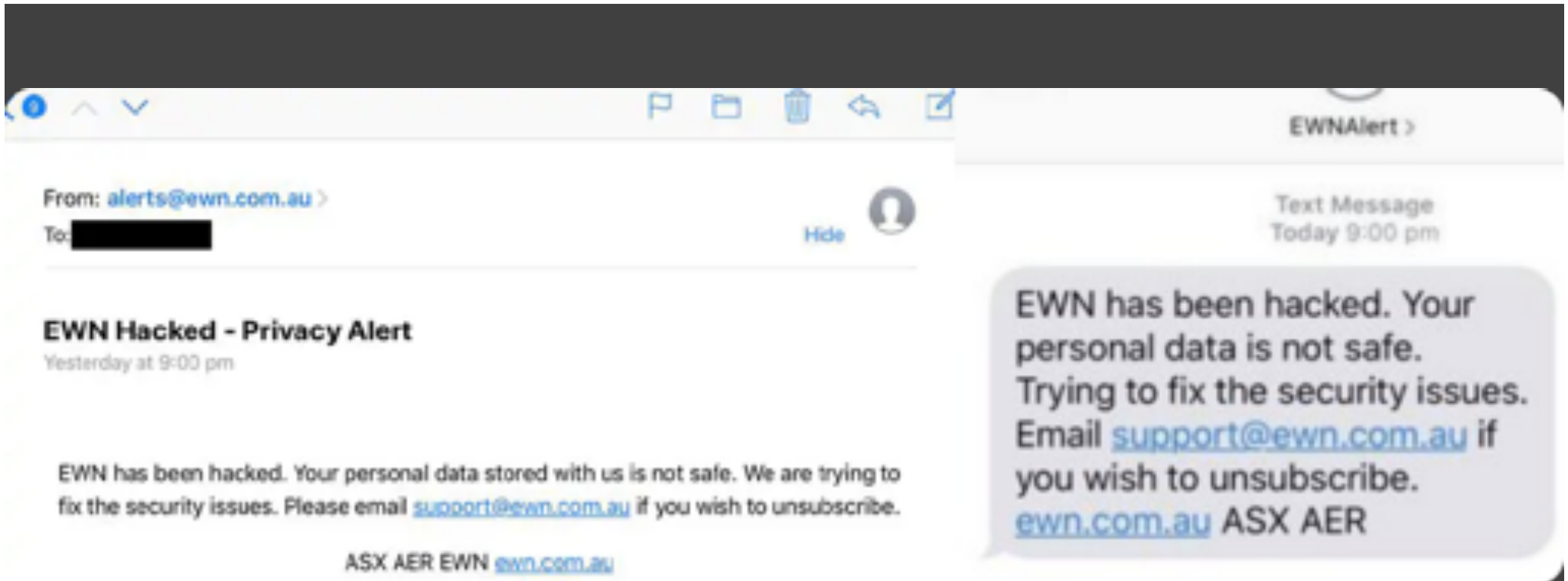
FIRE STATIONS

A photograph of a person with a beard and glasses, wearing a headset, sitting at a desk in a control room. The desk is equipped with multiple computer monitors, a keyboard, and a mouse. The person is looking at the screens. In the background, there are more desks and monitors, suggesting a multi-person workstation environment. A large window is visible in the background, and a television screen is mounted on the wall. The overall scene is a professional emergency operations center.

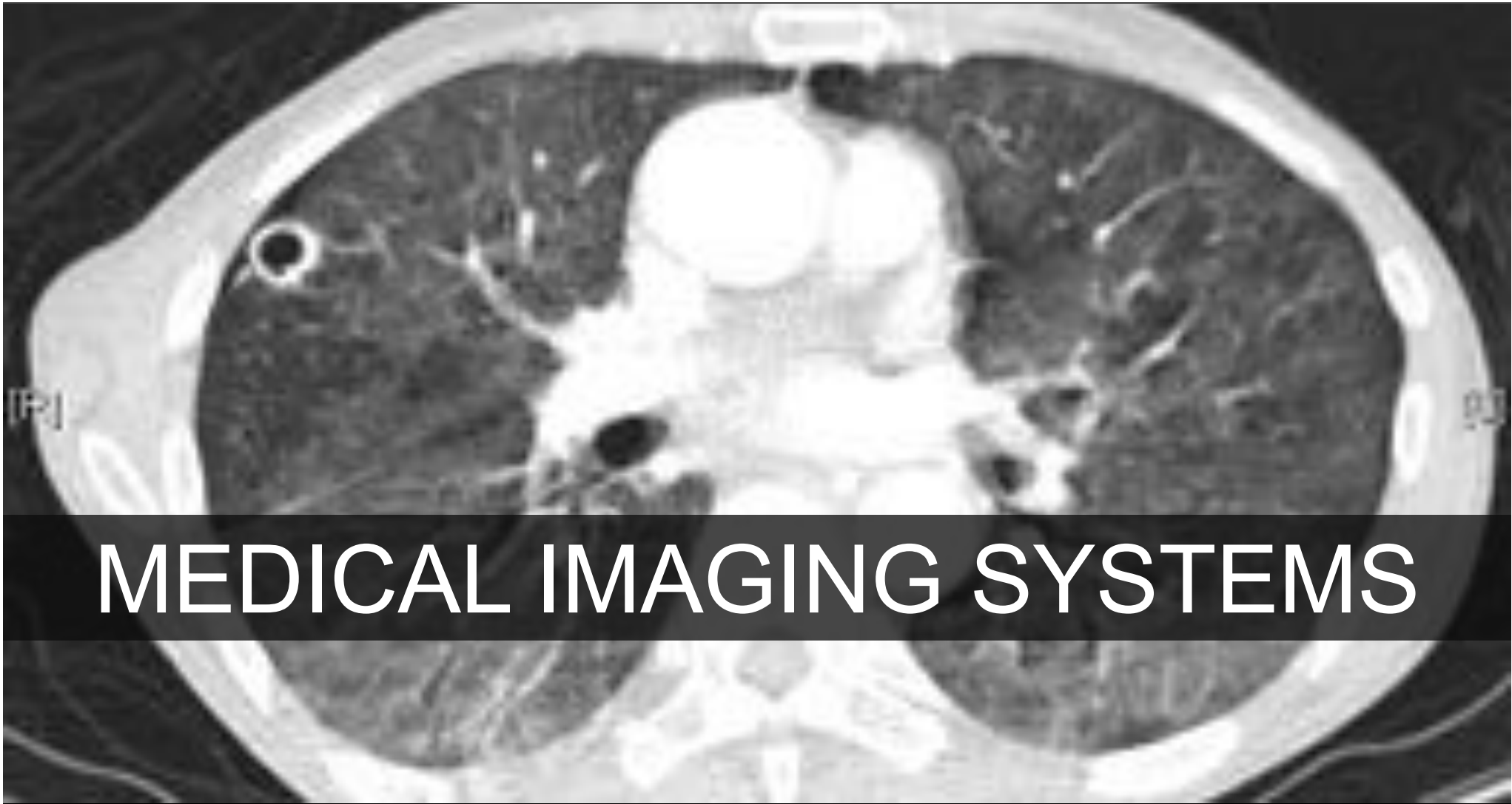
911 EMERGENCY OPERATIONS



EMERGENCY SIRENS



EWN ALERTS



MEDICAL IMAGING SYSTEMS



MEDICAL DEVICES



HOSPITALS



BANKS

ATMs



A photograph of a worker in a steel mill. The worker is wearing a green protective suit and a hard hat, standing on a metal platform. In the background, there is a large, glowing orange-red furnace or ladle, with bright light and sparks emanating from it. The scene is dimly lit, with the primary light source being the intense heat of the steel-making process.

STEEL MILL?



INDUSTRIAL ROBOTS

INDUSTRIAL SWITCHES





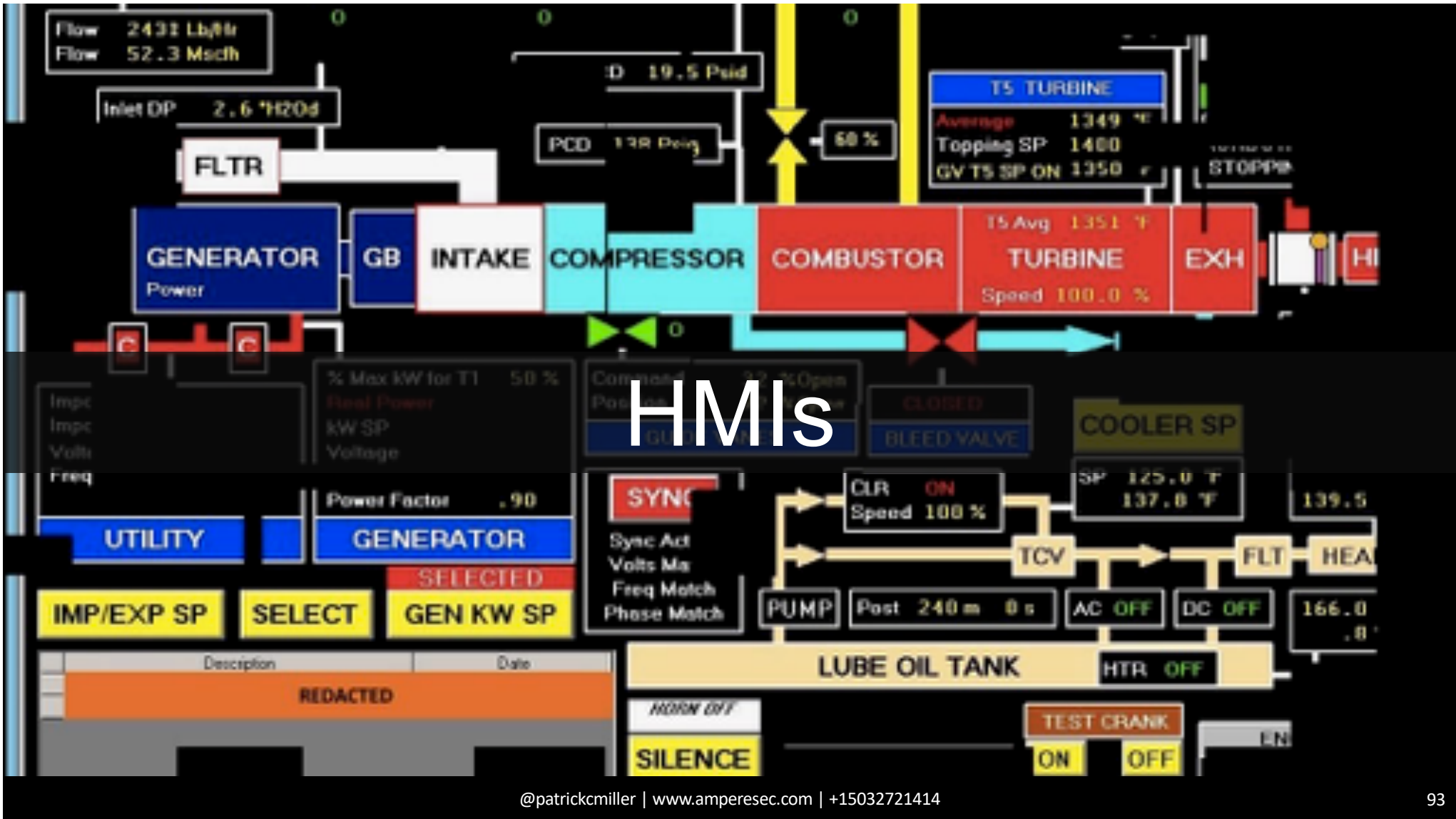
RELAYS

A close-up photograph of a rack-mounted Remote Terminal Unit (RTU). The device is light blue and features several rows of ports. On the left, there are RJ45 Ethernet ports, some with status LEDs. To the right, there are multiple rows of terminal blocks with screw terminals for wiring. The text "RTUs" is overlaid in white on a dark horizontal band across the center of the image.

RTUs



PLCs





ELECTRIC METERS



POWER INVERTERS

A photograph of a large solar farm. The solar panels are arranged in long, parallel rows, extending from the foreground into the distance. The panels are dark blue with a grid of white lines. They are mounted on a metal structure supported by white posts. The ground is covered with green grass and some brown patches. The sky is overcast with grey and white clouds. A dark horizontal band is overlaid across the middle of the image, containing the text 'SOLAR PANELS' in white, bold, sans-serif font.

SOLAR PANELS



WIND TURBINES



GENERATION PLANTS

An aerial photograph of a wastewater treatment plant. The image shows several large, rectangular aeration basins filled with dark blue water. Metal walkways and railings are visible around the basins. In the background, there are more industrial structures and a clear blue sky with some clouds. The text "WATER DISTRIBUTION" is overlaid in white on a dark horizontal band across the middle of the image.

WATER DISTRIBUTION



WATER METERS





WASTEWATER TREATMENT



REFINERIES





SAFETY INSTRUMENTED SYSTEMS



GLOBAL TELCOS

MUNICIPAL GOVERNMENTS



STATE GOVERNMENTS

ATTACKS
266



A nighttime photograph of the United States Capitol building in Washington, D.C. The central dome is brightly lit and stands out against a dark blue twilight sky. The rest of the building is also illuminated, showing its classical architectural details like columns and pediments. The city lights of Washington are visible in the background.

FEDERAL GOVERNMENTS



ELECTIONS

INTELLIGENCE AGENCIES



A photograph showing a large, bright orange and yellow explosion or rocket launch from a military vehicle in a desert environment. The explosion is the central focus, with a large plume of fire and smoke. In the foreground, various pieces of military equipment, including what appears to be a mounted machine gun or sensor, are visible. The background shows a flat, sandy desert landscape under a clear blue sky.

DEFENSE AGENCIES



ANYTHING & EVERYTHING



SO...
WHAT ARE WE
DOING ABOUT IT?















javascript likes warm weather!

@ravici

Every time I'm talking to someone not in security:

Me: I'm an elite hacker. Work on contract. Know all that stuff you hear about with the Russians and Chinese and banks and power grids and stuff? All that.

Them: Seriously?

Them: Do you know why I can't print in color?

3:48 AM - Jan 17, 2020 - [Twitter Web App](#)









YES, IT'S HARD
IF IT WERE EASY, IT
WOULD ALREADY
BE DONE

THAT'S WHY YOU
CHOSE THIS JOB
TO SOLVE HARD
PROBLEMS, RIGHT?

**THIS WILL TAKE
PATIENCE & TIME
THIS WILL TAKE US ALL
WORKING TOGETHER**

KEEP AN OPEN MIND
LOSE THE EGO
IT'S OK TO NOT HAVE
ALL THE ANSWERS

WE NEED YOU
INNOVATE & DISRUPT
COLLABORATE
CONTRIBUTE



WE GOT THIS.



@PATRICKCMILLER



LINKEDIN.COM/IN/MILLERPATRICKC



PMILLER@AMPERESEC.COM



WWW.AMPERESEC.COM



+15032721414

